


OBSERVATORY

THE OPTICIANS

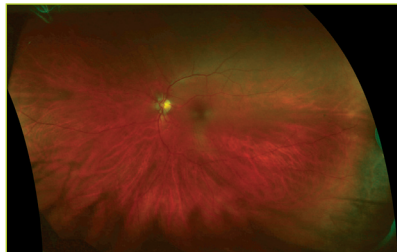
INDEPENDENT • EXPERIENCED • PROFESSIONAL

+ Share with a friend 

Optomap® Retinal Exam

The Optomap® Retinal Exam is a comprehensive method of evaluating, monitoring, and helping treat various eye conditions. This medical technology assists our Optometrist in viewing the retina to detect early signs of eye disease as well as diabetes, heart disease, hypertension and cancer.

The Optomap ultra-wide digital retinal scan captures more than 80% of your retina in one panoramic image. Traditional methods reveal only 10-12% of your retina at one time. The Optomap allows



A retinal image of a healthy eye

our optometrist to confirm your retinal health, or discover signs of abnormalities or disease. This offers an opportunity for our optometrist to diagnose eye conditions early, as well as other health conditions. The Optomap enables you and our

optometrist to determine the best course of action.

The Optomap takes just minutes to perform; it is fast, painless and comfortable for patients. It is particularly helpful when you return for your next exam as it provides a permanent record of the condition of your retina. Our optometrist will compare each year's Optomap image side by side to discover even subtle changes and monitor your continuing eye health.

Why is the retina important?

It is important to make sure that your retina is healthy. An unhealthy retina cannot send clear signals and this can result in impaired vision or blindness. If detected early, most retinal conditions and other diseases can be treated successfully. Although you may see clearly, it is still important to have your retina checked. The retina has no nerve endings and may not feel pain so there may be a problem that you are not aware of.

Protect your family's vision

We all want to protect our vision. That is why it is important for people of all ages to have regular eye examinations that include the clinical evaluation of your retina – regular exams are vital to maintaining your vision and overall health.

From children to seniors, the Optomap allows our optometrist to view your retina quickly and in a non-invasive manner.

Detecting disease with the Optomap retinal exam

A comprehensive eye exam, including a thorough retinal exam, can detect early signs of numerous diseases that affect not only your eyes and your sight, but also your overall health. The Optomap retinal exam helps our optometrist identify abnormalities that could indicate the onset of a number of diseases that often present first in the retina. In these instances, individuals typically do not experience any pain or outward symptoms.

Cancer

Melanomas can grow undetected within the retina. If discovered early, these masses can be treated before they cause serious damage and spread to other areas of the body through the bloodstream.

Hypertension (High blood pressure)

Often the first indicators of high blood pressure, compromised blood vessels, appear in the retina and may signify increased pressure in the blood vessels throughout your body.

Age related macular degeneration (AMD)

Caused by changes in the retina due to the body's aging process, AMD blurs the sharp, central vision.

Retinal detachment (RD)

When the retina detaches, it is lifted or pulled from the wall of the eye and, if not properly treated, can cause permanent vision loss.

Glaucoma

Excess fluids within the eye elevate the intraocular pressure, which pushes against the optic nerve and can cause permanent vision loss.

Diabetic retinopathy (DR)

A leading cause of blindness, DR occurs when diabetes damages the tiny blood vessels inside the retina.

www.observatory.co.uk

This technology is currently available at our Leigh-on-Sea Practice:
LEIGH-ON-SEA 01702 719335